

SENIORS CONNECTIONS

In-person Program



4460 Beresford St
(South House)

*Join our in-person program
twice a week!*

Wednesdays: 10:00 AM - 2:30 PM *No lunch*

Fridays: 10:30 AM - 2:30 PM (\$5 for lunch)

A schedule of activities is available!

Come by our South House and pick up a copy
or call 604-431-0400 to have it emailed to you.

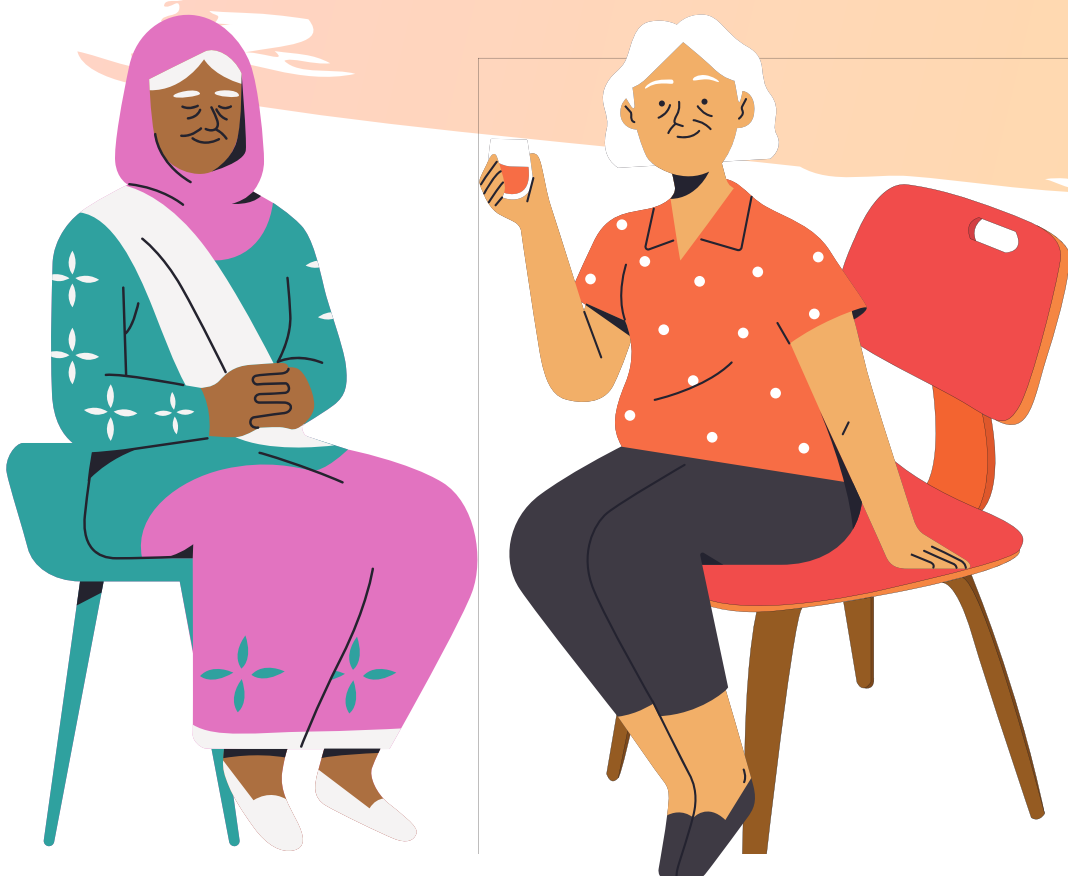
To register: Contact Ann at 604-431-0400 or annf@burnabynh.ca

**Enjoy
lunch!**

**Social
with
friends!**

**Play
games!**

And much more!



Burnaby Neighbourhood House is a community driven and community funded agency located on the unceded territories of the Tsleil-Wauthuth (səlilwətaʔt), Kwikwetlem (kwikwəłəm), Squamish (Skwxwú7mesh Úxwumixw) and Musqueam (xʷməθkʷəyəm) nations with a unique focus on neighbours supporting neighbours.

